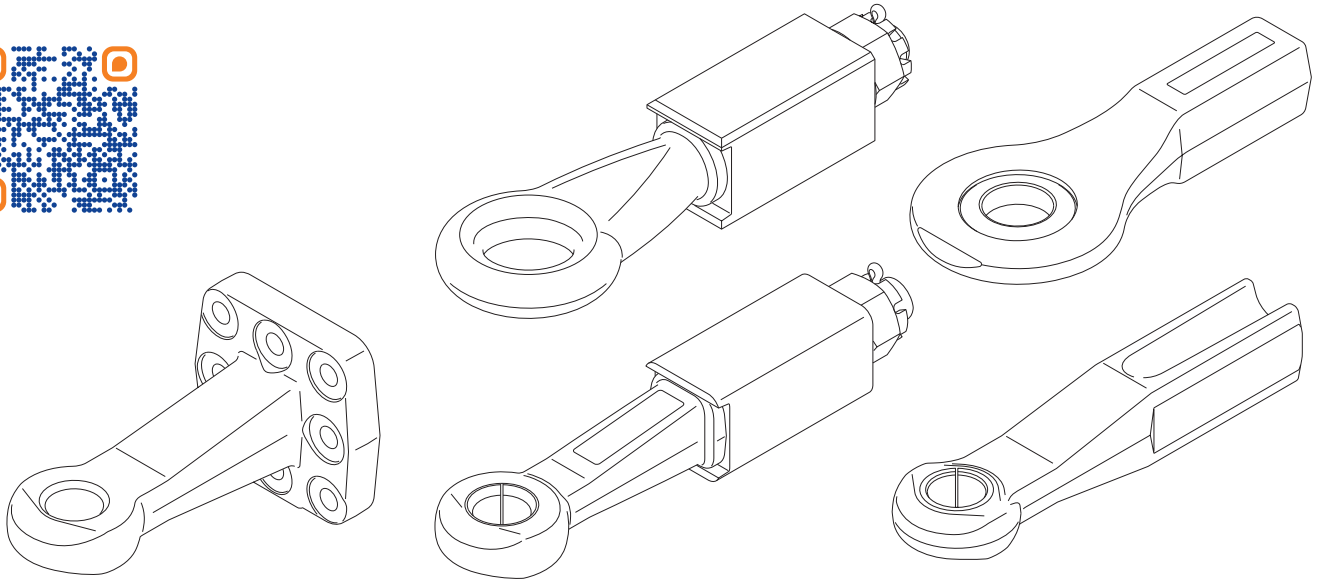
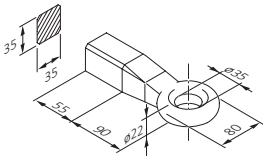


Zugösen • Drawbar eyes



35 mm

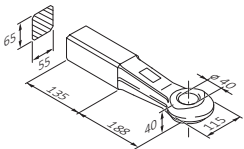
Zugöse für Flurförderzeuge mit Schweißende DIN 8454 • Towing eye for industrial trucks for welding DIN 8454



	h x b (mm)	R (t)	S (kg)	(kg)	ECE
ROE57065	35 x 35	4	–	1,4	no ECE

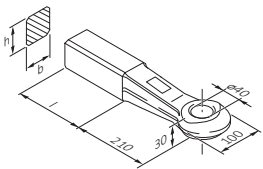
40 mm

Form A mit Schweißende nur für schweizer Anhängerkupplungen • Shape A for welding only for swiss towing hitches



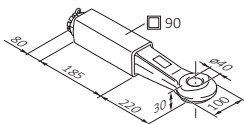
	h x b (mm)	D (kN)	Dc (kN)	S (kg)	V (kN)	(kg)	ECE
ROE57229 (CH)	65 x 55	168	66	900	20	9	E1 55R-01 2202

Form A mit Schweißende DIN 74054 • Shape A for welding DIN 74054



	h x b (mm)	l (mm)	D (kN)	Dc (kN)	S (kg)	V (kN)	(kg)	ECE
ROE57260	40 x 40	110	18	18	180	8	4,1	E1 55R-01 2545
ROE57262	50 x 40	110	25	25	250	9	4,7	E1 55R-01 2544
ROE57264	50 x 50	110	70	50	500	14	5,9	E1 55R-01 2332
ROE57268	65 x 55	125	125	66	900	20	7,8	E1 55R-01 2333
ROE57270	65 x 60	125	125	74	1000	23	8,2	E1 55R-01 2334
ROE57374	65 x 57	125	125	42,4	250	12	5	E1 55R-01 2203

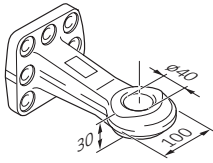
Form B mit Schraubende DIN 74054 • Shape B for bolting DIN 74054



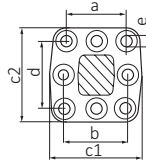
	h x b (mm)	D (kN)	Dc (kN)	S (kg)	V (kN)	(kg)	ECE
ROE57318	90 x 90	125	74	1000	23	18	E1 55R-01 2336

Zugösen • Drawbar eyes

Form C/D mit Flansch DIN 74054 • Shape C/D with flange DIN 74054



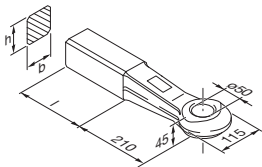
	h x b (mm)	D (kN)	Dc (kN)	S (kg)	V (kN)	(kg)	ECE	ROE
ROE57243	–	130	100	1000	35,8	8,8	E1 55R-01 0046	ROE70951
ROE57349	–	130	100	1000	35,8	8,8	E1 55R-01 0046	ROE70950



		a (mm)	b (mm)	c1 (mm)	c2 (mm)	d (mm)	e (mm)
ROE57243		100	110	154	154	110	17
ROE57349		100	–	154	154	110	17

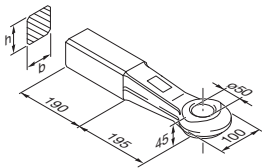
50 mm

Form A mit Schweißende DIN 74053 • Shape A for welding DIN 74053



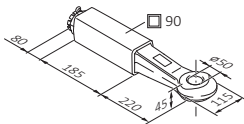
	h x b (mm)	D (kN)	Dc (kN)	S (kg)	V (kN)	(kg)	ECE
ROE57272	65 x 50	190	90	1000	30	10,71	E1 55R-01 2335
ROE57427	65 x 50	190	90	1000	30	10,71	E1 55R-02 2335

Schwerlastzugöse mit Schweißende • Heavy duty towing eye for welding



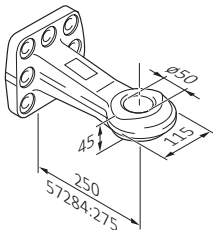
	h x b (mm)	D (kN)	Dc (kN)	S (kg)	V (kN)	(kg)	ECE
ROE57005	80 x 75	314	–	–	–	13,46	E1 55R-01 2146

Form B mit Schraubende DIN 74053 • Shape B for bolting DIN 74053

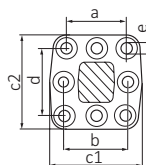


	h x b (mm)	D (kN)	Dc (kN)	S (kg)	V (kN)	(kg)	ECE
ROE57321	90 x 90	190	90	1000	25	19,83	E1 55R-01 2337
ROE57431	90 x 90	190	90	1000	25	19,83	E1 55R-02 2337

Form C/D mit Flansch DIN 74053 • Shape C/D with flange DIN 74053



	h x b (mm)	D (kN)	Dc (kN)	S (kg)	V (kN)	(kg)	ECE	ROE
ROE57244	–	190	135/113	1000/2500	72,5/43,2	11,5	E1 55R-01 0045	ROE70950
ROE57423	–	190	135/113	1000/2500	72,5/43,2	11,5	E1 55R-02 0045	ROE70950
ROE57284	–	250	135/113	1000/2500	90/43,2	17,4	E1 55R-01 0162	ROE70965



		a (mm)	b (mm)	c1 (mm)	c2 (mm)	d (mm)	e (mm)
ROE57244		100	110	154	154	110	17
ROE57284		130	130	190	180	130	21
ROE57423		100	110	154	154	110	17