

VARIOBLOC



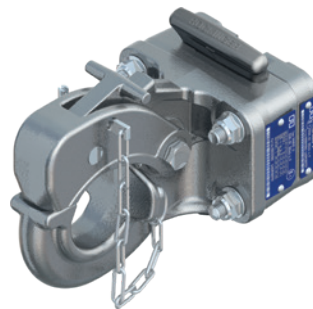
VARIOBLOC Click & Drive

DE Vorteile

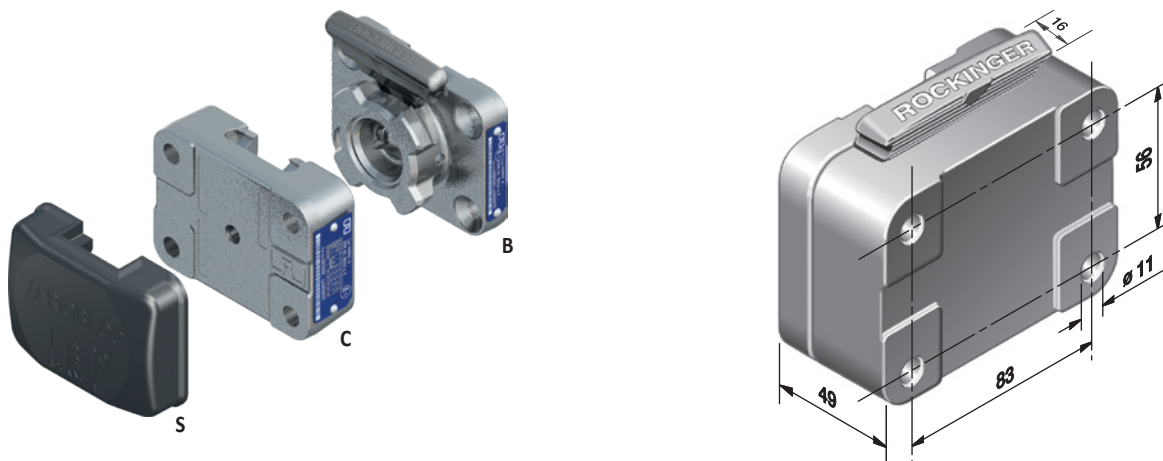
- Multifunktionales Schnellwechselsystem für Transporter, Geländewagen oder Busse
- In Verbindung mit Bolzen-, Hakenkupplung und Kupplungskugel
- Einfaches und schnelles Wechseln auch bei beschränkten Platzverhältnissen durch besonders zugängliche Konstruktion
- Erlaubt das schnelle und einfache Abnehmen oder Wechseln unterschiedlicher Kupplungssysteme
- Besonders geeignet auch für Hecktragesysteme und Arbeitsgeräte
- Mit ECE R55-01 Zulassung

EN Benefits

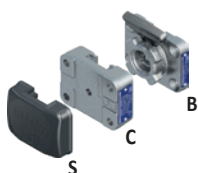
- Multifunctional alternating system for transporters, cross-country vehicles or buses, in connection with pin hitch, hook trailer hitch or hitch ball
- Particularly easy-to-access construction enables simple changing, even when space is limited
- Allows various coupling systems to be changed and removed easily
- Also particularly suitable for towbar bracket systems and work devices
- Approval according ECE R55-01








VARIOBLOC



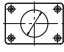




Technische Daten • Technical data

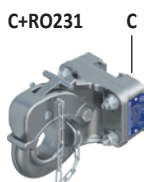


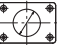

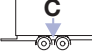


							
	(mm)	D (kN)	Dc (kN)	S (kg)	V (kN)	(kg)	ECE
ROE100A01002*	83 x 56	30	30	250	12	3	E1 55R-01 0044
ROE100A02002*	83 x 45	30	18	200	9,6	3	E1 55R-01 0044

* Belastungswerte nur in Verbindung mit RO243 • Load values only in combination with RO243

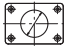






							
Lastfall A, B Loading condition A, B	(mm)	D (kN)	Dc (kN)	S (kg)	V (kN)	(kg)	ECE
ROE100C01511	83 x 56	30	30/18	250	8,4/12	6	E1 55R-01 0031

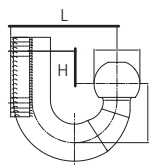


								
Lastfall C Loading condition C	(mm)	D (kN)	Dc (kN)	S (kg)	V (kN)	C (t)	(kg)	ECE
ROE100C01521	83 x 56	20	18	150	–	3,5	5	no ECE



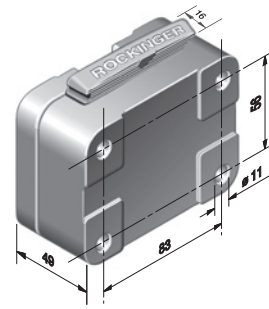
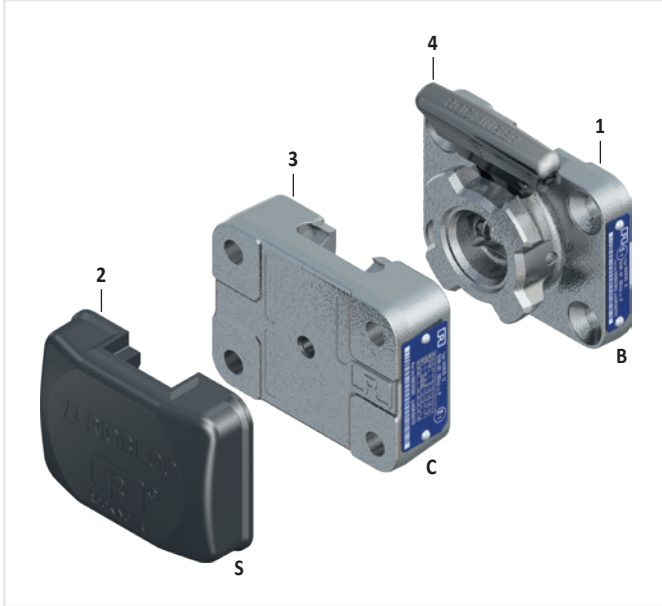
							
Lastfall I, II Loading condition I, II	(mm)	D (kN)	S (kg)	H (mm)	L (mm)	(kg)	ECE
ROE100C01561*	83 x 56	19	200	-29	136	5	E4 55R-01 0101
ROE100C01551*	83 x 56	22,1	270	-89	117	6	E4 55R-01 0099
ROE100C01531*	83 x 56	22,5	275	-34	118	5	E4 55R-01 0101
ROE100C01541*	83 x 56	27,5	300	+19	104	5	E1 55R-01 0100

* Bei Kombination von Basis- und Wechselplatten unterschiedlicher Lochbildausführungen sind die jeweils kleineren Belastungswerte der Tabelle/ISO-Linien zulässig. • Where base and interchangeable plates with different hole patterns are combined, the lower load figures in the table/ISO-Linien shall be applicable in each case.



VARIOBLOC

Ersatzteile • Spare parts



Pos.		ROE	
01	Basisplatte • Base plate (83 x 56 mm)	ROE100B01002	1
01	Basisplatte • Base plate (85 x 45 mm)	ROE100B02002	1
02	Abdeckkappe • Cover cap	ROE25666	1
03	Wechselplatte • Change plate (83 x 56 mm)	ROE100C01001	1
03	Wechselplatte • Change plate (85 x 45 mm)	ROE100C02001	1
04	Hebel • Lever	ROE70761	1

Befestigungssätze • Screw sets



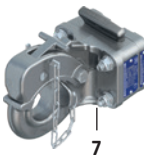
Basisplatte
Base plate on the vehicle

Pos.	L (mm)	ROE	
05	40	ROE70759	1
05	50, 30	ROE70756	1
05	55	ROE70570	1
05	60	ROE70558	1
05	110	ROE70754	1
05	130, 40	ROE70805	1



Bolzenkupplung 243 auf Wechselplatte
Pin hitch 243 on the quick-change plate

Pos.	L (mm)	ROE	
06	50	ROE70755	1



Hakenkupplung auf Wechselplatte
Hook trailer hitch on the quick-change plate

Pos.	L (mm)	ROE	
07	50	ROE70755	1



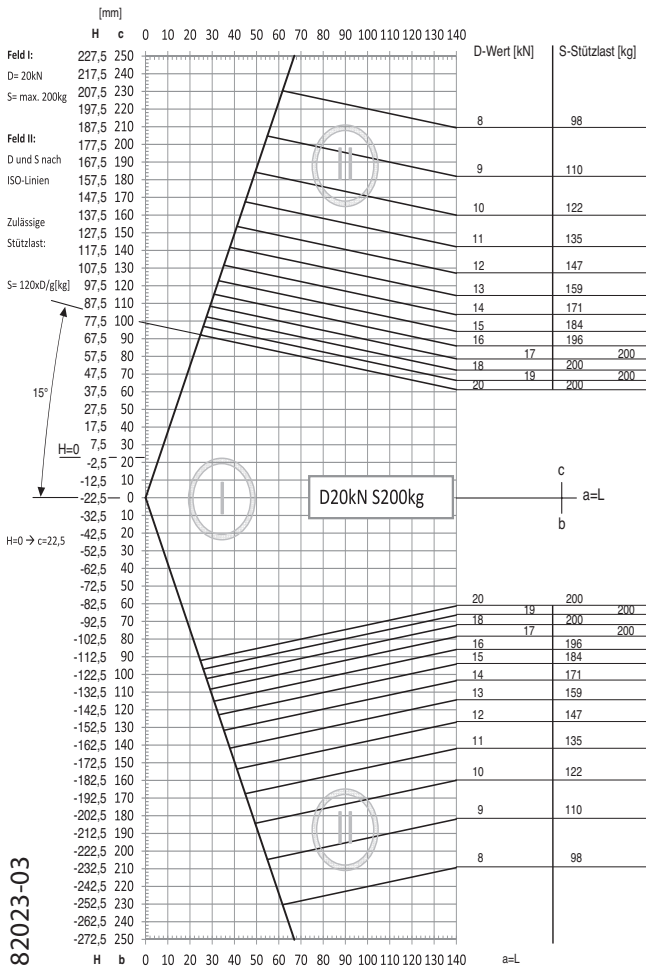
Kupplungskugel auf Wechselplatte
Hitch ball on the quick-change plate

Pos.	L (mm)	ROE	
08	50	ROE70755	1
08	60	ROE70757	1
08	65	ROE70758	1

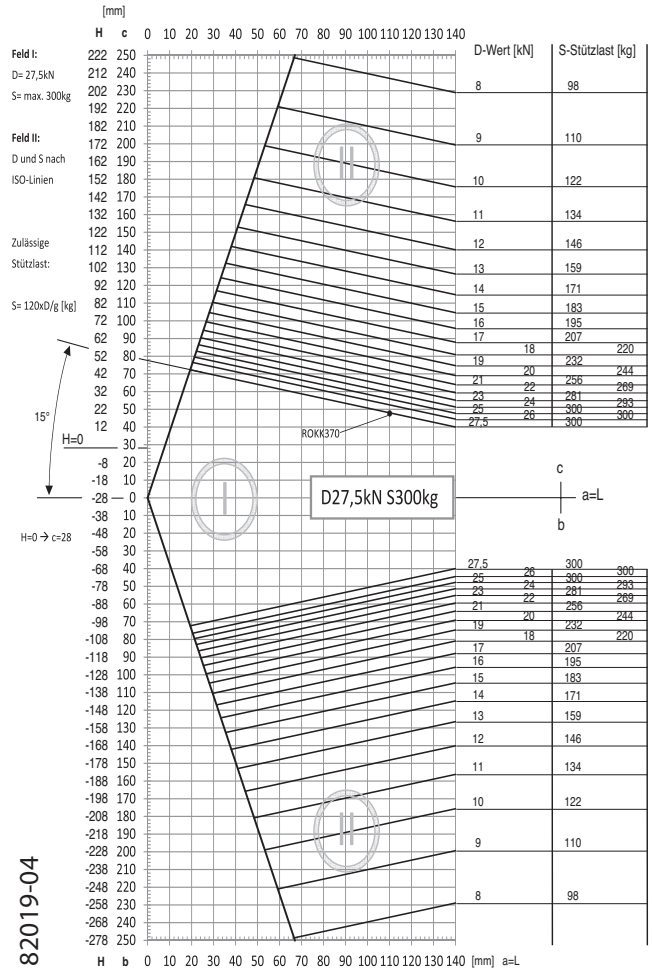
VARIOBLOC

- DE** In Verbindung mit Kugelhupplungen von Fremdherstellern
- EN** In combination with ball hitches from other manufacturers

ISO 85 x 45 / Y-V / Y-U / X-V



ISO 83 x 56 / X-U



82023-03

82019-04

MUB 016023 M50 (REV 01/07/2016) (PG)

